



Welcome to
London Middle School for the 2021-22
school year.



We can't wait to see you on Monday, August 23!



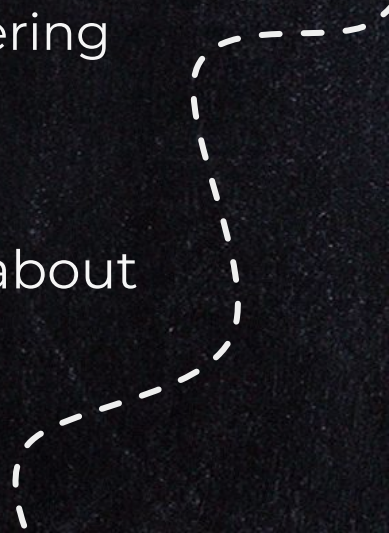


Arrival to School Procedures



Outcomes

- **Understand the safety measures** students are expected to follow while being in school.
- **Know the appropriate entrances** different students should use when entering school.
- **Understand the hallway routes** to use when entering the building and going to your arrival location.
- **Be clear on your destination** upon arrival.
- **Reach out regarding questions** you might have about arrival procedures.





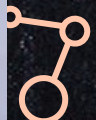
But before we begin, a
reminder:





Herndon Middle School is an
"AWAY FOR THE DAY" school.

This means phones are away from the moment students enter the building until they leave the building at 2:15. Phones must be out of sight during the school day.



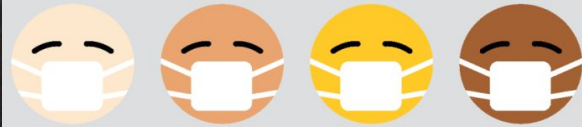


Safety Measures



Masks - Mask will be worn at all times by students, staff, and visitors.

- On the bus
- On school grounds
- In the hallways
- In the classrooms
- In school



✚ **Wash Your Hands**-It is important to
wash and sanitize your hands frequently. + A



✚ Walk on the Right Hand Side of
the Hallway. ⌚





Entering School.

What Door to Use?



School Map and Entrances



Door #2 is the entrance for students who ...

- **Walk** to school, but
- **won't have breakfast** in the cafeteria.

Door #6 is the entrance for students who ...

- **Ride the bus** to school, or
- who arrive by **Kiss & Ride** or
- **walk and will have breakfast** in the cafeteria

A





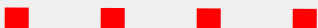
DOOR #6

Is Your Door To Enter If...

- You **ride the bus** to school, or
- You who arrive by **Kiss & Ride** or
- You **walk** and **will have breakfast** in the cafeteria

DOOR #6

8th Graders



7th Graders
8th graders
wanting
breakfast



+ DOOR #6

8th Graders

Walk safely
up the Main
Hallway on
the right
side toward
the front of
the building.



7th Graders
and
8th Graders
wanting
breakfast

Turn right at
the entrance
and head
toward the
cafeteria.

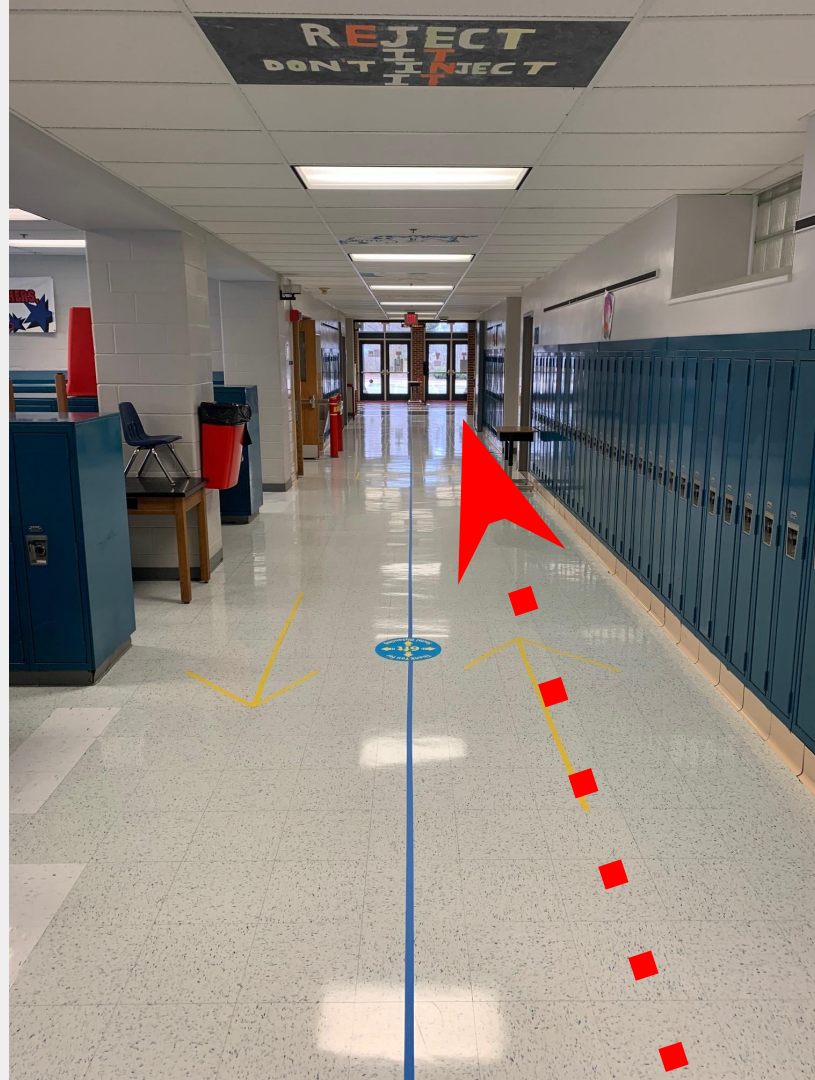


DOOR #6

8th Graders

8th Graders

Walk safely
up the Main
Hallway on
the right
side toward
the front of
the building.





DOOR #6

8th Graders

8th Graders

Turn right at
the front lobby
and head
toward the
auditorium.





DOOR #6

8th Graders

8th Graders

Turn left at the
auditorium
lobby and
head into the
auditorium.





DOOR #6

8th Graders

8th Graders

CONGRATULATIONS!

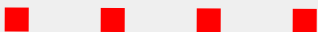
**You have arrived at
the beautiful HMS
Auditorium.**

**Please listen for
directions when you
arrive there.**



✚ DOOR #6

8th Graders



7th Graders
8th graders
wanting
breakfast



+ DOOR #6

8th Graders

Walk safely
up the Main
Hallway on
the right
side toward
the front of
the building.



7th Graders
and
8th Graders
wanting
breakfast

Turn right at
the entrance
and head
toward the
cafeteria.

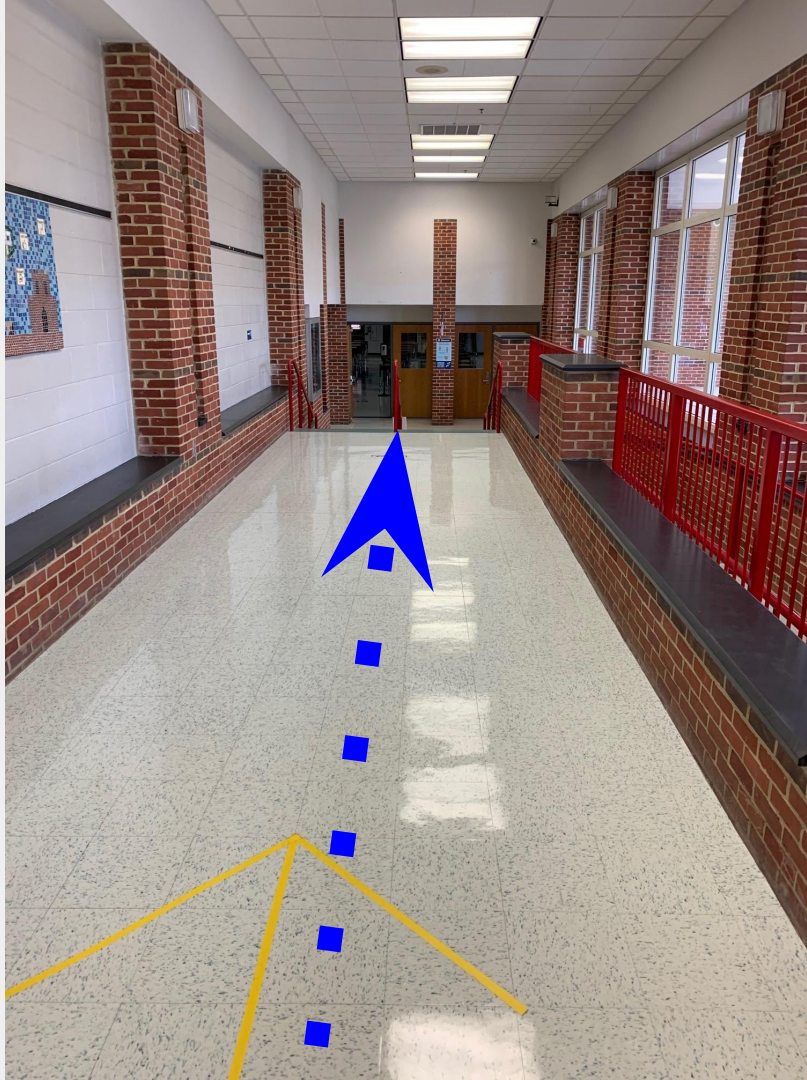


DOOR #6

Are you hungry?

7th Graders
and
8th Graders
wanting
breakfast

Turn right at
the entrance
and head
toward the
cafeteria.





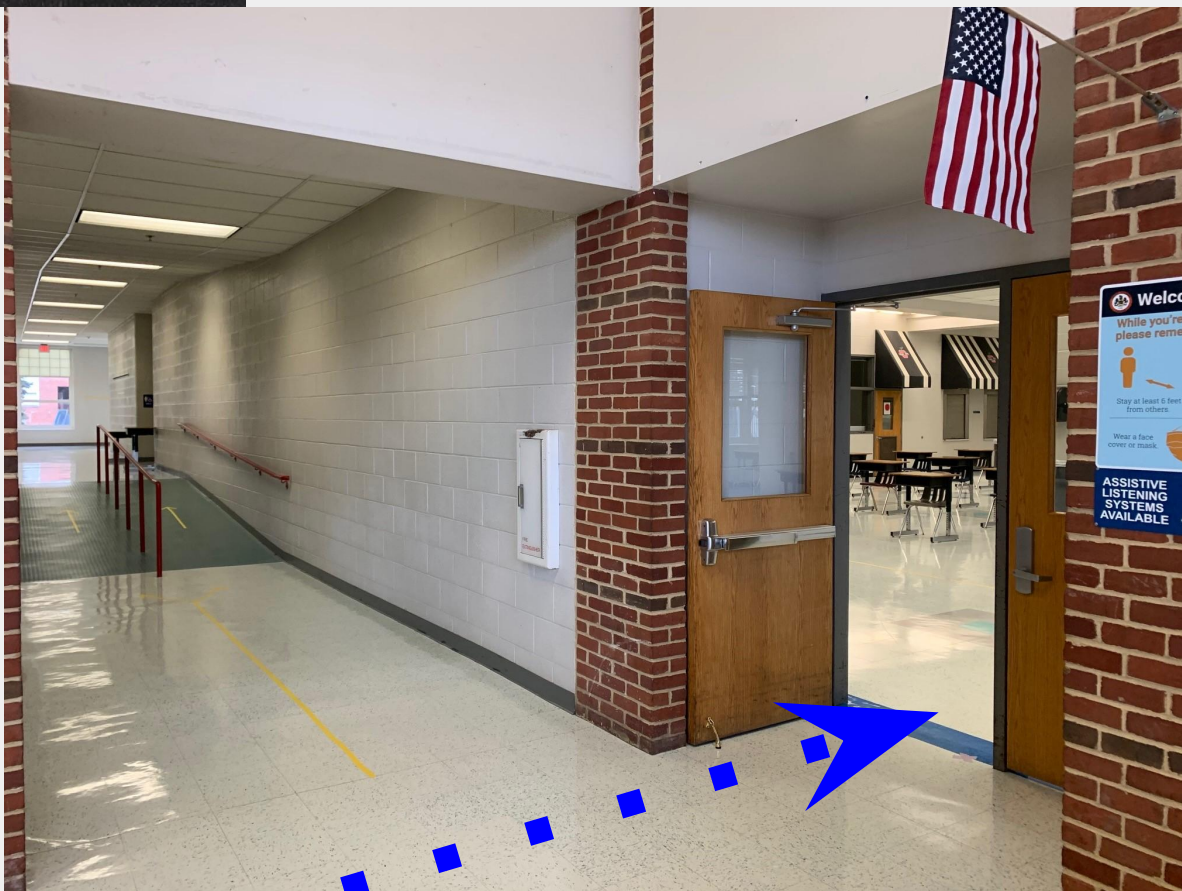
DOOR #6

Are you hungry?

7th Graders
and
8th Graders
wanting
breakfast

CONGRATULATIONS!

You have arrived
at the friendly
HMS Cafeteria.



Cafeteria Notes!

- Students will get their breakfast and sit at a table.
- Students will remain seated until dismissed by an adult.
- The restrooms near the cafeteria are open only during arrivals and lunches.



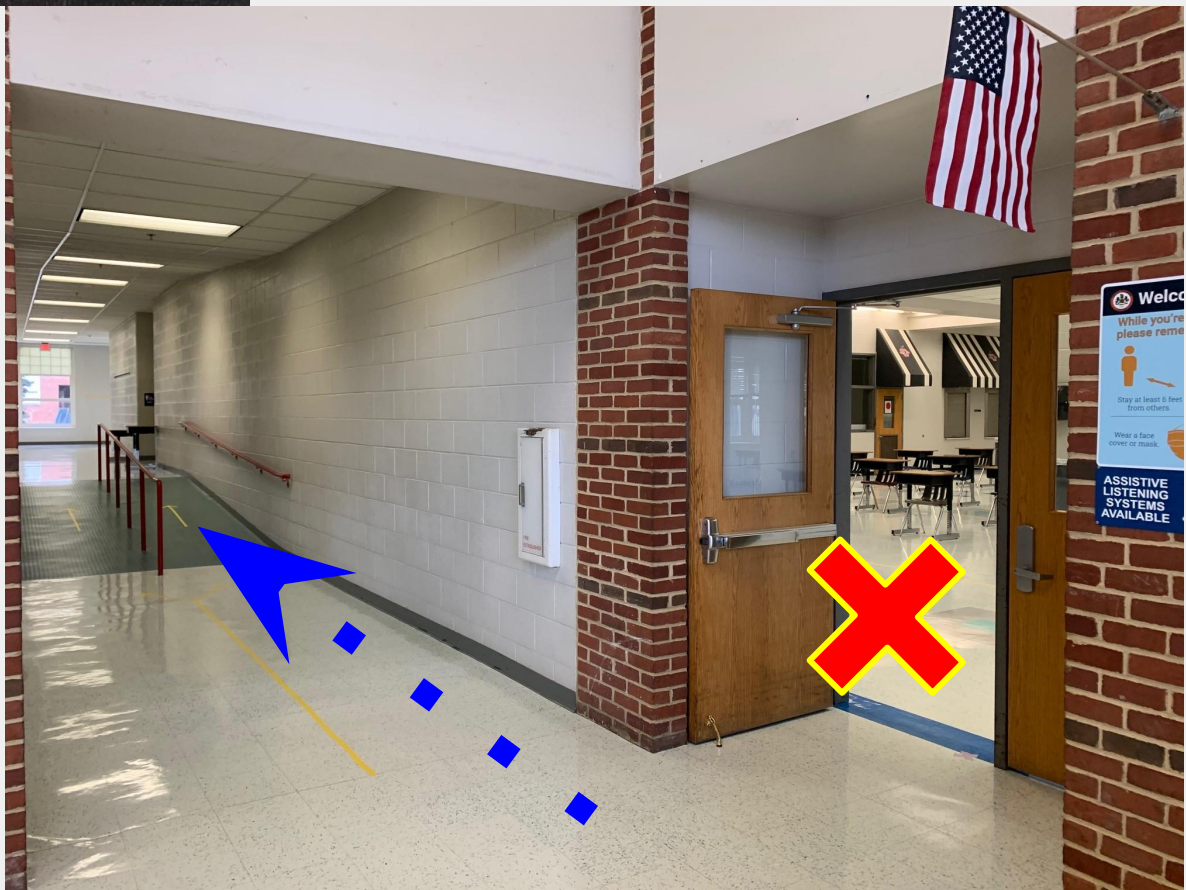


DOOR #6

7th Graders Not hungry?

7th Graders

Turn left at the Cafeteria and head toward the FACS hallway.



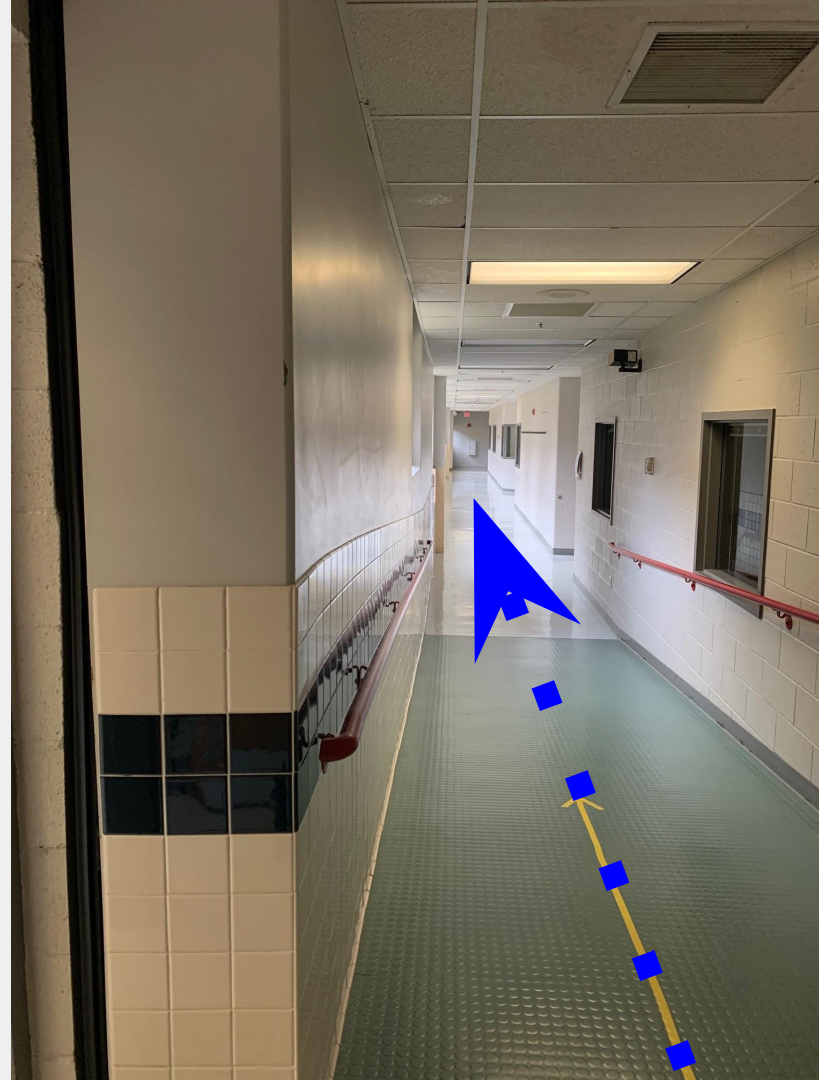


DOOR #6

7th Graders Not hungry?

7th Graders

Continue down
the FACS hallway
and toward the
Auditorium lobby.





DOOR #6

7th Graders Not hungry?

7th Graders

Turn right at the Auditorium lobby and head down the ramp to the Big Gym.





DOOR #6

7th Graders Not hungry?

7th Graders

CONGRATULATIONS!

**You have arrived
at the spacious
HMS Big Gym.**





DOOR #2

Is Your Door To Enter If...

- You **walk** to school, but
- You **won't have breakfast** in the cafeteria.

DOOR #2

**7th and 8th
Grade
Students**

**As you
prepare to
enter, line
up safely at
the door.**





DOOR #2

8th Graders

8th Graders

Head directly
into the
beautiful HMS
Auditorium





DOOR #2

8th Graders

8th Graders

CONGRATULATIONS!

**You have arrived at
the beautiful HMS
Auditorium.**

**Please listen for
directions when you
arrive there.**



DOOR #2



7th Graders



7th Graders

**Turn right
inside the
entrance
and head
toward the
hallway.**

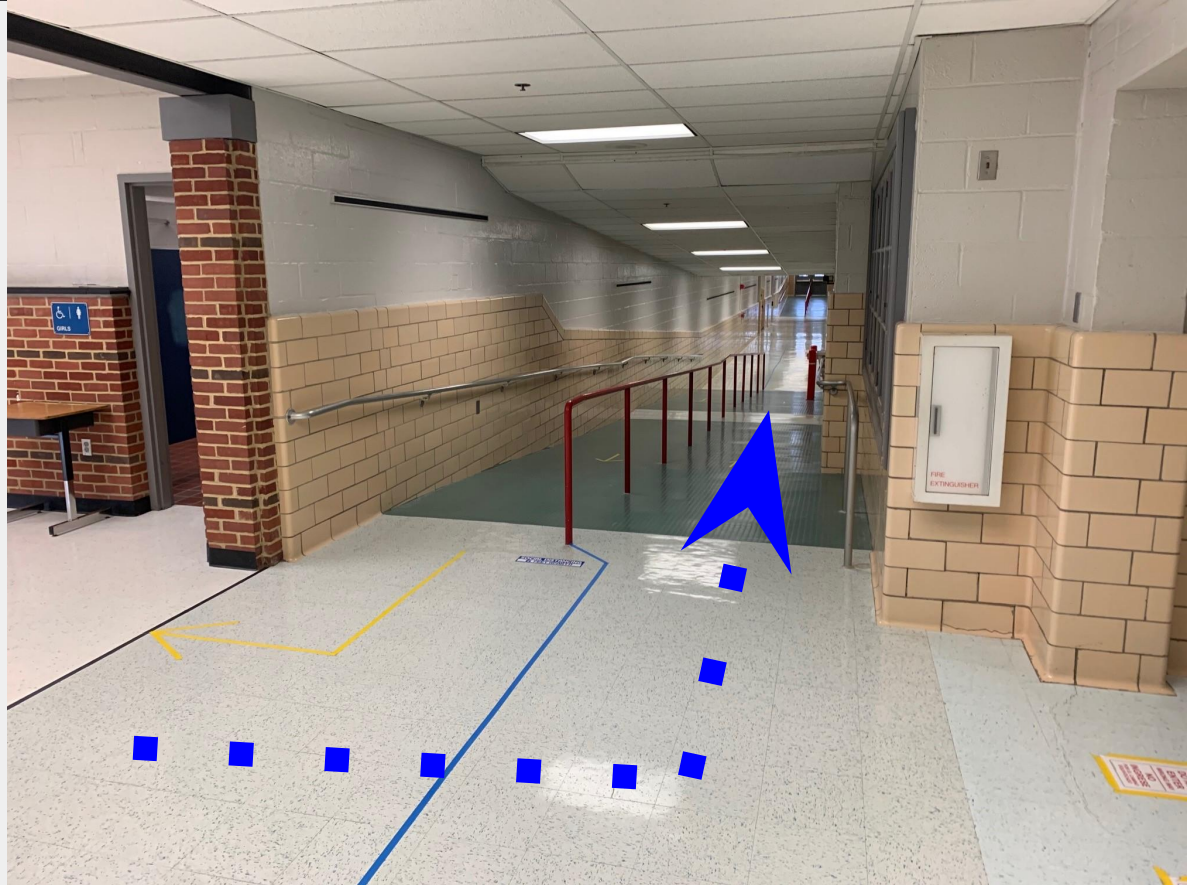


DOOR #2

7th Graders

7th Graders

Turn left at the hallway and head down the ramp to the Big Gym.





DOOR #2

7th Graders

7th Graders

CONGRATULATIONS!

**You have arrived
at the spacious
HMS Big Gym.**



So to Review:

Arrival Destinations



1. **The Auditorium** - **8th Graders** who are NOT wanting breakfast in the cafeteria.
2. **The Big Gym** - **7th Graders** who are NOT wanting breakfast in the cafeteria.
3. **The Cafeteria** - **any student** who will want breakfast in the cafeteria.



Who to ask if you have questions:

Any teacher

Any Administrator

Any staff member



Basically, any adult you see in the building.

